



Health Services Staffs  
Credit Union



# Kredit Newsletter

**Welcome** to the autumn issue of Kredit. We have an important message from our Chairman concerning the change of date from December to January 2019 of our AGM. On page 2 we have suggestions about making the most of Autumn to ready yourself for Winter. Yes... Christmas is coming fast so our proposed opening hours and some advice on how to manage are on page 3. If you are considering applying for a Christmas loan please apply early so that you have it available in plenty of time for when you are ready to hit the shops! Congratulations to all of our various prize winners on pages 5 and 6.

## IN THIS ISSUE OF KREDIT

Personal Loan  
Christmas Savings & Loans  
Average price for new cars  
Irish Aid and Irish League of Credit Unions Foundation  
Youth Corner  
Prize Draw Winners  
Opening Hours

## A Message from our Chairman Pat O'Neill

A Chairde,

As you know your credit union continues to grow in strength year on year and the recent transfers of engagements of credit unions in Cork, Dublin and Galway into HSSCU has assisted this growth considerably. Our membership is now truly nationwide, and in an effort to facilitate as many members as possible to attend our Annual General Meeting we have decided to reschedule the meeting to January and to hold the meeting on a Saturday.

**The proposed date for this year's AGM is Saturday the 12th of January 2019 @2pm in The Radisson Blu Hotel, Golden Lane, Dublin 8.**

**Refreshments will be served from 1pm. Meeting starts at 2pm sharp.**

We see this as an opportunity to facilitate members from around the country or those of you who work evenings who may wish to attend.

We hope you will be able to make it on the day and join us as we reflect on another tremendous year of growth for your credit union.

Yours faithfully,

Pat O'Neill.



## Betty Noone Education Bursary 2018

There were a total of 586 applications received this year. Of that, 550 applications were completed whilst there were 36 incorrect applications.

Some of the reasons for the incorrect applications were the wrong year (i.e. they will qualify for

next year), no letter from their employer, no receipts to prove fees were paid and insufficient transactions in their account.

A total of **€119,993** was approved for payment this year amongst the 550 completed applications.

So, remember if you have paid for college or extra-curricular activities this Autumn ensure you retain the receipts in a safe place and you're ready to apply next year.



# Whatever life throws at you... we've got you covered with a Personal Loan from HSSCU this Autumn.

**8.5%**  
**(8.99% APR variable)**

Did you know that Autumn is the time when you put your head down and prepare for the winter ahead? That's why all Summer we've been hard at work creating loan options that can make the next few months a walk in the park.

- Maybe you are planning on moving into your own place and need help with the deposit.

Whether you want to improve your home to make it cosy for Christmas i.e. upgrade the central heating, replace draughty windows and doors or cover your house in lights to keep your neighbours awake until January 6th. A loan from HSSCU should never be off the table. In fact, we consider our loans for the Autumn season as essential tools for all of our members, because they will make the next few months a stress-free zone. Let's take a look:

Whatever life throws at you... we've got you covered with a Personal Loan from HSSCU at a rate of 8.5% (8.99% APR).

Let's say you're looking for €2,000, you can get that for as little as €41.03 per month over 5 years. Why not check out our loan calculator at [www.hsscu.ie/loans](http://www.hsscu.ie/loans) for a loan and repayment level that suits your needs?



Loan Amount	60 monthly instalments of:	Total Interest	Total amount repayable
€2,000.00	€41.03	€461.98	€2,461.98
€5,000.00	€102.58	€1,154.96	€6,154.96
€8,000.00	€164.13	€1,847.94	€9,847.94
€10,000.00	€205.17	€2,309.92	€12,309.92

All figures for illustrative purposes only.

So, whatever life throws at you remember we're here to help at HSSCU, work out what you need then check out our loan calculator at [www.hsscu.ie/loans](http://www.hsscu.ie/loans) for a loan that will work for you and not break the bank. However, if you start planning early, you'll be less stressed over the next few months and be able to enjoy the transition from Autumn to Winter.

**Warning: If you do not meet repayments on your loan, your account may go into arrears. This may affect your credit rating, which may limit your ability to access credit in the future.**

Autumn is a great time to improve the things you've neglected over the Summer months- like making improvements to your home. If you want to change the colour of a room, or the carpet on the floor, our Personal Loan rate option may be the right one for you with an interest rate of 8.5% (8.99% APR). For instance, let's say you want to borrow €5,000, you can pay back as little as €102.58 per month over 5 years.

Loans at HSSCU are affordable and won't break the bank... so if it's a little decorating you're after or a boiler that needs upgrading... why not look at our Personal Loan option? Alternatively, why not calculate an amount that works for you by checking out our loan calculator at [www.hsscu.ie/loans](http://www.hsscu.ie/loans). Don't forget for larger projects i.e. more than €25,000 we have a Special Home Improvement loan rate. See [www.hsscu.ie](http://www.hsscu.ie) for more details.

During the next few months, it's unclear what life is going to throw your way.

- Maybe you're going to pop the question over Christmas,
- You want to escape the Winter blues with a couple of weeks in the sun or





# Christmas Savings Accounts

Our Christmas Savings accounts are extremely popular with members. You can save whatever you wish, you may decide to put away €10 or €20 per week and the accumulated savings from your Christmas account will be paid out in the middle of November each year. As always members can choose to receive these savings by electronic funds transfer (i.e. directly into your bank account) rather than by cheque in the post.

Lodgements will continue into this account after the payout has taken place so that you immediately start saving again for next year. The amount being saved can be increased or decreased by sending in a signed written instruction.

It is important to note that we need to have the correct bank details to transfer the funds, so if you ever change your bank account you must advise us as well.

Once a member it's never too late to open a Christmas savings account with us and you can do so by visiting our website [www.hsscu.ie](http://www.hsscu.ie) and downloading the form today – fill it in and return it to us. Look what you could have saved over 12 months in time for next Christmas:

Amount per week	52 weeks
€10.00	€520.00
€20.00	€1,040.00
€25.00	€1,300.00

# Christmas Loans: at Personal loan rate 8.5% (APR 8.99%)

It's never too early to start planning for the Christmas season. Our Christmas Loans are classified as Personal Loans, so the standard rate of 8.5% (8.99% APR) applies.

The key to an effective and stress free Christmas is to start planning early. That means creating a list of who's naughty or nice, work out how much you will need and then check out our loan calculator at [www.hsscu.ie/loans](http://www.hsscu.ie/loans) for a loan that will work for you and not break the bank.

However, if you start planning early, you'll be less stressed over the next few months and be able to enjoy the transition from Autumn to Winter. Why not plan for your Christmas now?

**Christmas Loan apps: Christmas is a busy time for all, it's always important to get your Christmas loan application in early.**

Loan Amount	Term	Monthly repayments	Cost of credit	Total amount repayable
€1,000.00	1 year	€87.22	€46.64	€1,046.64
€1,500.00	1 year	€130.83	€69.96	€1,569.96
€2,000.00	1 year	€174.44	€93.27	€2,093.27

All figures for illustrative purposes only.

**Warning: If you do not meet repayments on your loan, your account may go into arrears. This may affect your credit rating, which may limit your ability to access credit in the future.**



## Christmas Week Opening Hours:

Day	Registered Office 5 High Street, Christchurch, Dublin 8
<b>Christmas Eve</b>	Closes at 12.30pm
<b>Christmas Day</b>	CLOSED
<b>St Stephens Day</b>	CLOSED
<b>Thursday 27th December</b>	CLOSED
<b>Friday 28th December</b>	Normal hours
<b>New Years Eve</b>	Closed at 12.30pm
<b>New Year's Day</b>	CLOSED
<b>Wednesday 2nd January</b>	Normal hours resume

Further details on branch opening hours can be found on our website: [www.hsscu.ie/contact-us](http://www.hsscu.ie/contact-us)



## Average price for new cars hits €30,000.00

New research from cartell.ie, the vehicle history company, has highlighted that the average value of new cars being sold on the Irish market has exceeded €30,000.00 for the first time.

In 2007 at the height of the boom the average price for new car sales was €28,106 however in 2011 at the height of the recession this had dropped to €24,758, but has increased year on year since then.

As the economy improves, consumer confidence returns to see a significant increase in the average spend on a new car. There has also been a significant shift towards larger vehicles away from hatchbacks or saloons towards SUVs and MPVs. Cars are also being sold with higher specifications and many safety features, which are generally costly, are now standard across a number of models.

Despite repeated warnings, 67% of cars are now purchased using PCP or Hire Purchase leaving members with large balloon payments to manage.

The HSSCU Special Car Loan rate (6.99% Apr 7.22%) has been very popular with members. We continue to offer this to members who wish to extract themselves from a pending PCP Balloon payment. If you find yourself with a balloon payment looming, help is at hand, pick up the phone and talk to our team today.

For those of you thinking of changing your car and going brand new with a 191 here is a sample of some of the repayments required. You can also access our Loan Calculator on [www.hsscu.ie/loans](http://www.hsscu.ie/loans) if you have your own specific amount or term in mind. If you know how much you can afford to repay then let the loan calculator assist you in figuring out how much you can apply for.

Loan Amount	60 monthly instalments of:	Total Interest	Total amount repayable
€15,000.00	€296.95	€2,816.83	€17,816.83
€20,000.00	€395.93	€3,755.78	€23,755.78
€30,000.00	€593.89	€5,633.67	€35,633.67
€35,000.00	€692.88	€6,572.61	€41,572.61

All figures for illustrative purposes only.

**Warning: If you do not meet repayments on your loan, your account may go into arrears. This may affect your credit rating, which may limit your ability to access credit in the future.**

Remember with a HSSCU car loan:

- There are no penalties for early repayment.
- Interest is charged on the declining balance only, not on the principal sum – so you pay less interest over the term of the loan, the quicker you repay it the less interest you pay.
- You will own the car from the beginning unlike a Hire Purchase or PCP finance arrangement.
- No transaction fees or hidden charges or nasty surprises down the line.

So, if you are considering changing your car or need assistance dealing with a PCP Balloon payment talk to us today.



*From L to R Ann Campbell (Branch Manager Galway office), Rachel Curley (HSSCU Staff member Galway office), Ciarán Cannon, T.D., Minister of State for the Diaspora and International Development and Alan Moore General Manager of the ILCU Foundation.*

## Irish Aid and Irish League of Credit Unions Foundation

The Irish League of Credit Unions' International Development Foundation (ILCU Foundation), the charitable arm of the Irish credit union movement, has been selected to receive €750,000 in funding from Irish Aid. The money will be used to deliver a three-year project to support the development of strong, sustainable credit unions in the West African country of Sierra Leone.

The funding will be used to achieve poverty reduction in Sierra Leone, one of the poorest countries in the world, specifically by expanding financial services in rural communities. Speaking from Galway where he met a number of credit unions who donate to the ILCU Foundation, Ciarán Cannon, T.D., Minister of State for the Diaspora and International Development, added: "I am delighted today to announce Irish Aid funding for the Irish League of Credit Unions' International Development Foundation (ILCU Foundation). The grant of €750,000 over three years will support the expansion of the credit union programme across Sierra Leone and will ensure access to affordable financial support, for some of the most vulnerable people in the country. Our support now is more important than ever, as people in Sierra Leone continue to recover from last year's devastating mudslides. Ireland has a proud record of working to eradicate poverty around the world and by ensuring that people in Sierra Leone have access to credit unions and to reliable financial services, Irish Aid and ILCUF are making sure that this important work continues into the future."



ENTER TO WIN!

# Promotions & Winners

## YOUTH CORNER

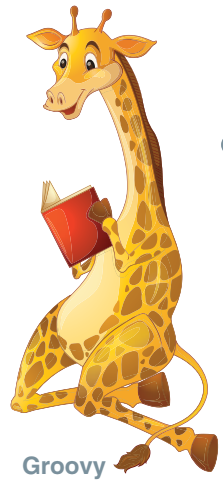
Welcome to the next instalment of Youth Corner. We hope you are enjoying the puzzles and quizzes in each issue. In this issue, we want to give you a chance to WIN A €50 ART & HOBBY VOUCHER, and there are some fun puzzles for you to try.



Cheeky Monkeys (0-5)



Terrific Tigers (6-11)



Groovy Giraffes (12-15)

## WORD-SEARCH

S	A	N	D	C	A	S	T	L	E	S	H	F
A	S	W	R	V	M	W	I	O	P	H	Q	A
C	F	Z	B	P	C	G	L	Z	O	E	A	M
F	O	A	E	A	M	S	Y	I	N	E	I	I
I	R	P	A	Q	P	U	L	S	M	P	N	L
S	E	B	C	A	W	R	C	R	A	B	S	Y
H	Y	Q	H	R	I	F	L	I	O	C	O	T
X	T	P	C	M	M	I	D	W	A	V	E	S
F	S	A	N	D	C	N	W	I	O	E	D	U
S	U	G	T	Y	M	G	P	L	Z	E	O	S
U	N	S	P	V	E	N	X	Y	P	N	G	W
H	O	V	O	L	L	E	Y	B	A	L	L	I
S	E	A	G	U	L	L	U	N	D	U	C	M

Can you find the hidden words? The words may be horizontal or vertical.

- SANDCASTLE
- BEACH
- SAND
- CRABS
- SUN
- VOLLEYBALL
- SURFING
- WAVES
- FISH
- FAMILY
- SWIM
- SEAGULL



## Movie competition

For your chance to WIN A €50 ART & HOBBY VOUCHER, just answer this very simple question:

**What film do the characters above star in?**



Cut out and post your answers to Youth Corner, HSSCU, 5 High Street, Christchurch, Dublin 8, or have your parent/guardian email [kredit@hsscu.ie](mailto:kredit@hsscu.ie) with your answer, name, age, address, parents name and contact number.

Closing Date: Deadline **30th November 2018**

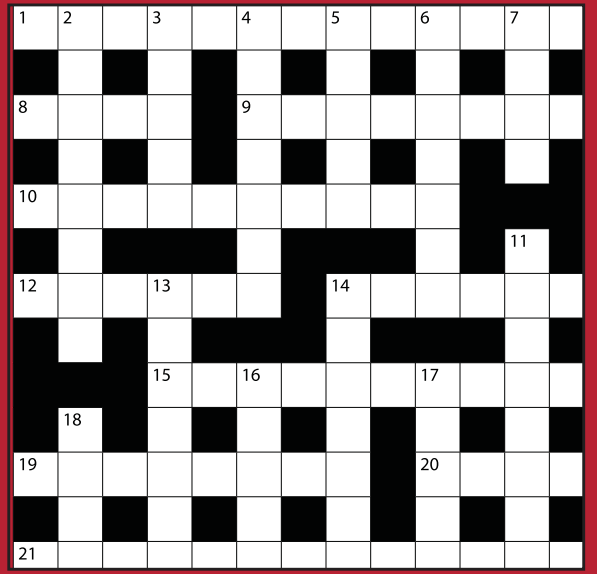
<b>Answer:</b>
Your Name:
Age:
Address:
Parent's Name:
Contact Number:

Congratulations to *Catriona Clear, from Leitrim* who correctly answered the question from the last issue of Kredit. *Catriona* has **WON A SMYTHS VOUCHER.**

## Crossword

- Across**
- 1 Aid to gradual progress (8,5)
  - 8 Surety (4)
  - 9 Impale, pierce (8)
  - 10 Discouragement (10)
  - 12 Rill, brook (6)
  - 14 Legal statement of complaint (6)
  - 15 Horrific (10)
  - 19 Outdoor cooking (8)
  - 20 Suffering, ache (4)
  - 21 More trouble than it's worth (5,8)

- Down**
- 2 Burlesque, mockery (8)
  - 3 Throb (5)
  - 4 Meanwhile (7)
  - 5 Cereals (5)
  - 6 Mosaic stone (7)
  - 7 Fixing device (4)
  - 11 Steeping in liquid (8)
  - 13 Display (7)
  - 14 Go before (7)
  - 16 Decorative pleat (5)
  - 17 Profundity (5)
  - 18 Ready money (4)



#putsUfirst

# Promotions & Winners

ENTER TO WIN!



## Prize Draw

Our prize draw is a not-for-profit draw. Entry is just €2.75 per month. Winners names are listed on [www.hsscu.ie](http://www.hsscu.ie). For more information and an entry form, go to the 'Forms' section of our website.

Each month the first prize winner will receive €20,000. 10 runners up will receive €1000 each.

The top prize winners for the last quarter were:

<b>JUNE WINNER</b>
Anthony Scott Retired
<b>JULY WINNER</b>
Triona Keogh HSE Manorhamilton
<b>AUGUST WINNER</b>
Lisa Burke St James Hospital

## 'Join a Friend' Competition

The winner of the 'Join a Friend' competition is **Jaspreet Kaur**.

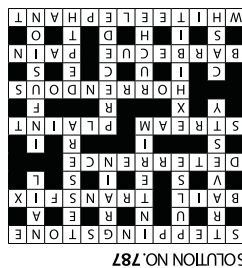
## E-Zine

Our E-zine is an electronic newsletter sent via email. By signing up you will be the first to know what's new at your credit union.



We'll send you news of services, products, competitions, winners and more on a regular basis. All new E-zine subscribers are entered in to a quarterly draw and can **win €100**.

You can sign up online via our website [www.hsscu.ie](http://www.hsscu.ie) or if you ring the office we will send you a form to complete.



## Competition Question; €100 One for All Voucher for the winner

### QUESTIONS

- 1 What is scheduled date of HSSCU AGM?
- 2 How many Betty Noone Bursary applications were received?
- 3 What is average price of new cars in Ireland in 2018?

Cut out and post your answers to Competitions, HSSCU, 5 High Street, Christchurch, Dublin 8, or email [kredit@hsscu.ie](mailto:kredit@hsscu.ie) with your name, address, membership number and phone number along with your answer.

Closing Date: Deadline **30th November 2018**  
Congratulations to **Aine Mooney** who is a winner of a One for All voucher

<b>Answer 1:</b>
<b>Answer 2:</b>
<b>Answer 3:</b>
<b>Name:</b>
<b>Address:</b>
<b>Membership Number:</b>
<b>Contact Number:</b>

find us on [facebook](#) Health Services Staffs Credit Union Limited follow us on [twitter](#) @hsscu

## OPENING HOURS:

Day	Registered Office 5 High Street, Christchurch, Dublin 8	James's Street Branch Phoenix View, 144-150 James's Street, Dublin 8	Cork Branch 34 St. Patrick's Quay, Cork	CIE Galway Branch Mayoralty House, Merchants Road, Galway
<b>Monday</b>	9:30am to 5:00pm	9:00am to 5:00pm	10:00am to 5:00pm	9:30am – 12.30pm and 1:30pm – 5pm
<b>Tuesday</b>	9:00am to 6:30pm	9:00am to 5:00pm	9.30am to 5:00pm	9:30am – 12.30pm and 1:30pm – 5pm
<b>Wednesday</b>	9:00am to 5:00pm	9:00am to 5:00pm	9.30am to 5:00pm	CLOSED
<b>Thursday</b>	9:00am to 6:30pm	9:00am to 5:00pm	9.30am to 5:00pm	9:30am – 12.30pm and 1:30pm – 5pm
<b>Friday</b>	9:00am to 5:00pm	9:00am to 5:00pm	9.30am to 5:00pm	9:30am – 12.30pm and 1:30pm – 5pm
<b>Saturday</b>	CLOSED	CLOSED	CLOSED	CLOSED

Please note that High Street, James's Street and Cork credit union offices remain open during lunch time each day.

Don't forget we offer 24/7 online accounts; transfer funds in/out of your account; check balances; make Debit Card payments online. Visit [www.hsscu.ie](http://www.hsscu.ie) or download the CU Anywhere App for your Smart Phone.



Health Services Staffs  
Credit Union

REGISTERED OFFICE: 5 HIGH STREET, CHRISTCHURCH, DUBLIN 8, D08X7T1.  
Tel: 01 677 8648 or Lo Call 1890 677 864 Email: [info@hsscu.ie](mailto:info@hsscu.ie)  
Branches listed on: [www.hsscu.ie](http://www.hsscu.ie)

Health Services Staffs Credit Union Limited is regulated by the Central Bank of Ireland